
VIBETEC INC.

260 Collinge Rd. Hinton, A.B. T7V 1L3

Phone (780) 817-2233 Fax. (780) 817-2236

 Email: rob@vibetec.com

 19th March 2011

Vibration Analysis Survey

Dear All,

The following report is based on data collected on the 14th Mar 2011:
Notes in italics have been mentioned on a previous report.

General Observations:

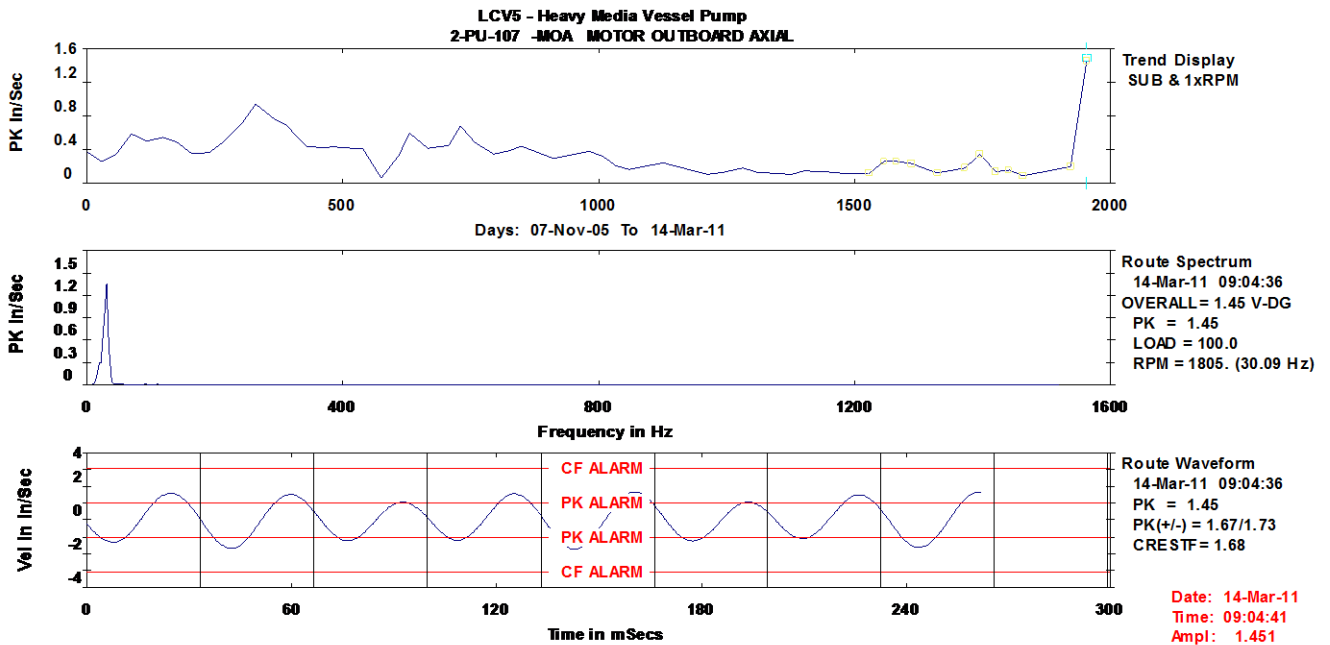
3-PU-102 has a mechanical seal leak.

2-CN-001 has an oil leak

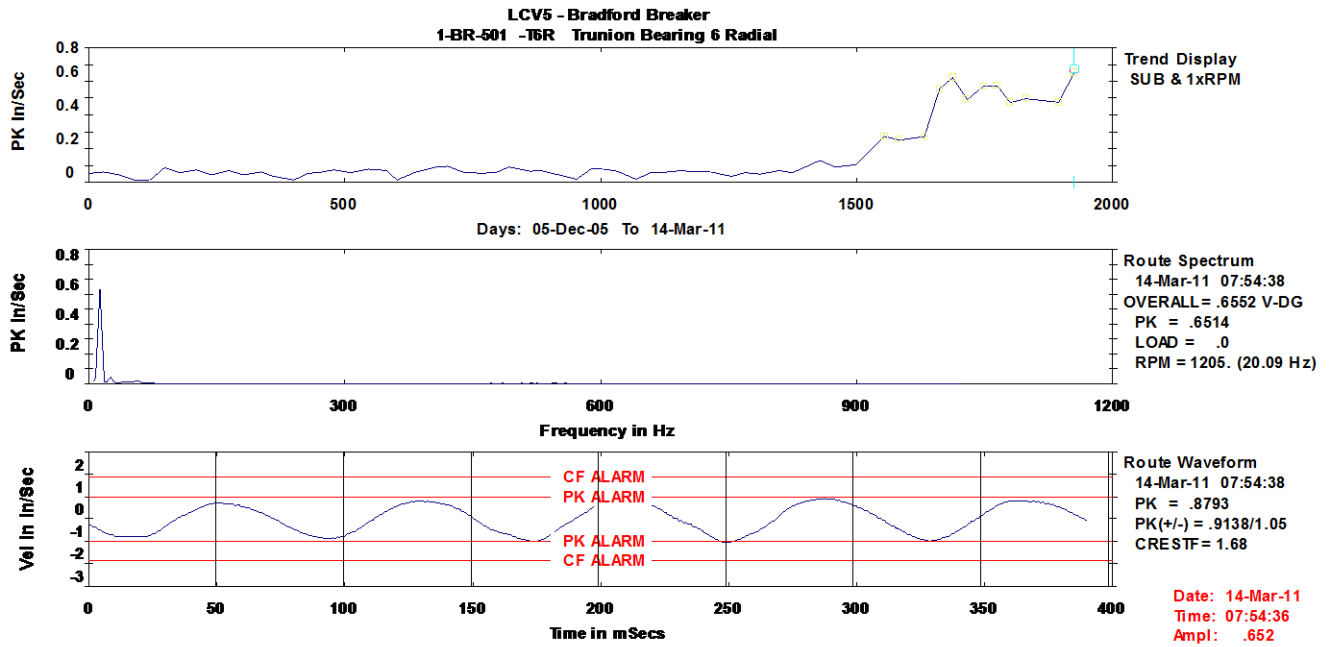
I found numerous problems right through the plant the following list is by alarm priority:

1/ 2-PU-107 Heavy Media Vessel Pump

The motor is unbalanced, check for excessive key length under the sheave and check the sheave alignment.

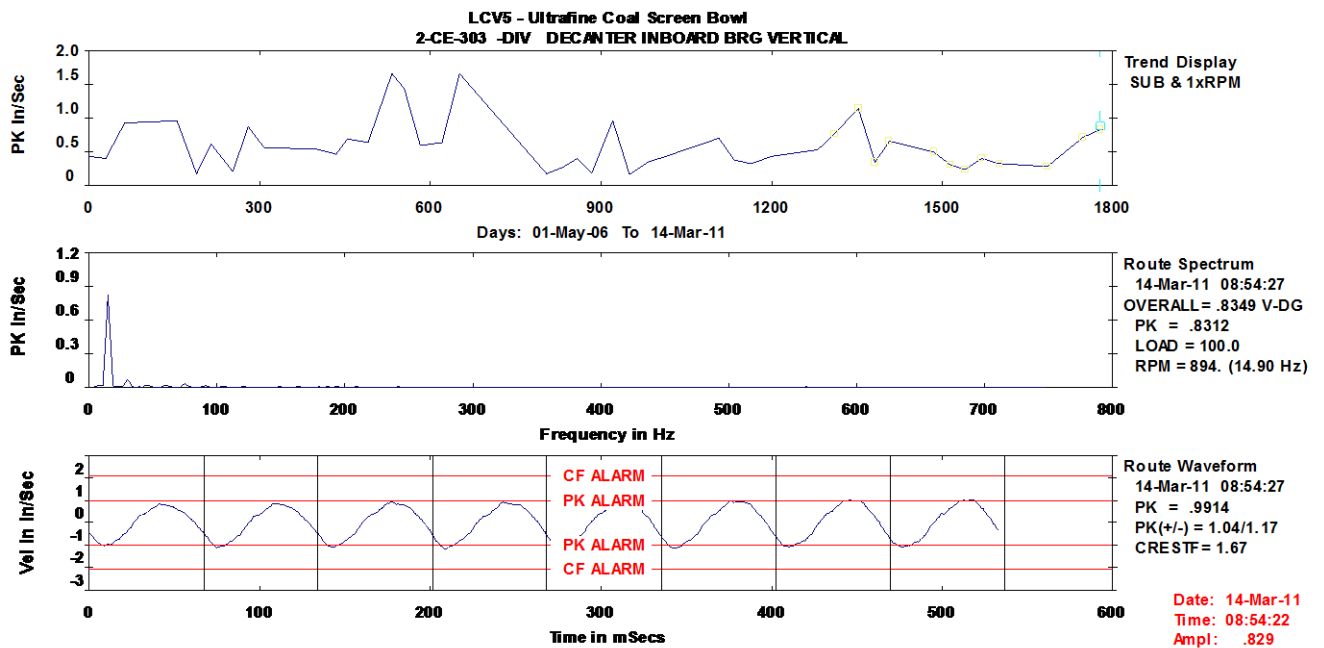

2/ 1-BR-501 Bradford Breaker

Vibration levels continue to increase. All of the trunion bearings had high “low frequency” vibration most noticeably on the end furthest away from the drive motor; I suspect that the drum contact ring has flat spots.



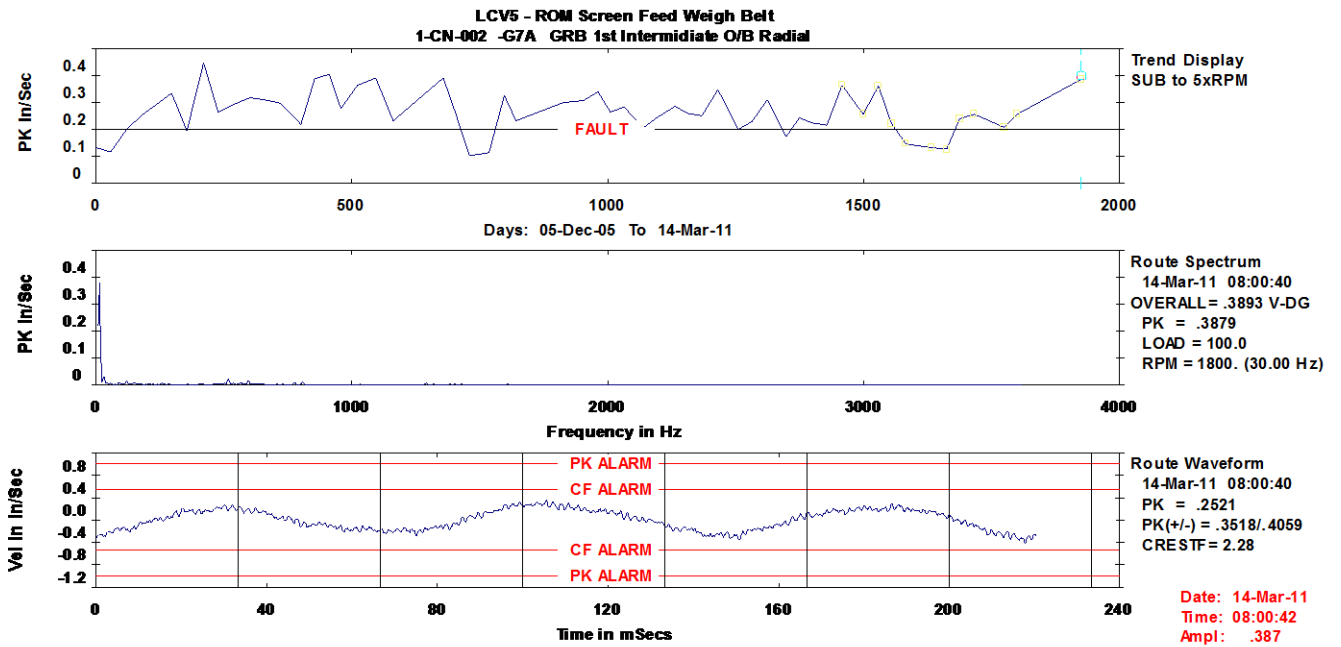
3/ **2-CE-303 Ultrafine Coal Screen Bowl**

The bowl has high vibration amplitudes that indicate unbalance— service A.S.A.P. & check for damaged or missing liners.



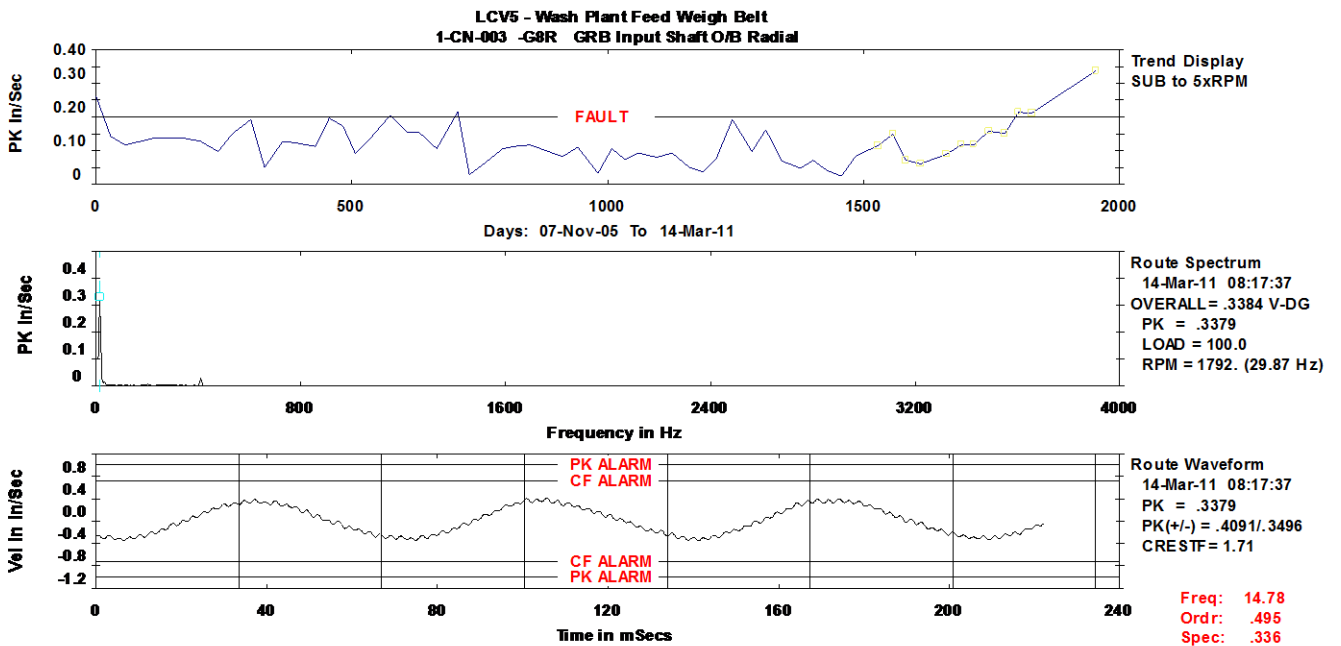
4/ **1-CN-002 ROM Screen Feed Weigh Belt**

Structural issues are causing high vibration amplitudes throughout the motor gearbox and drum.



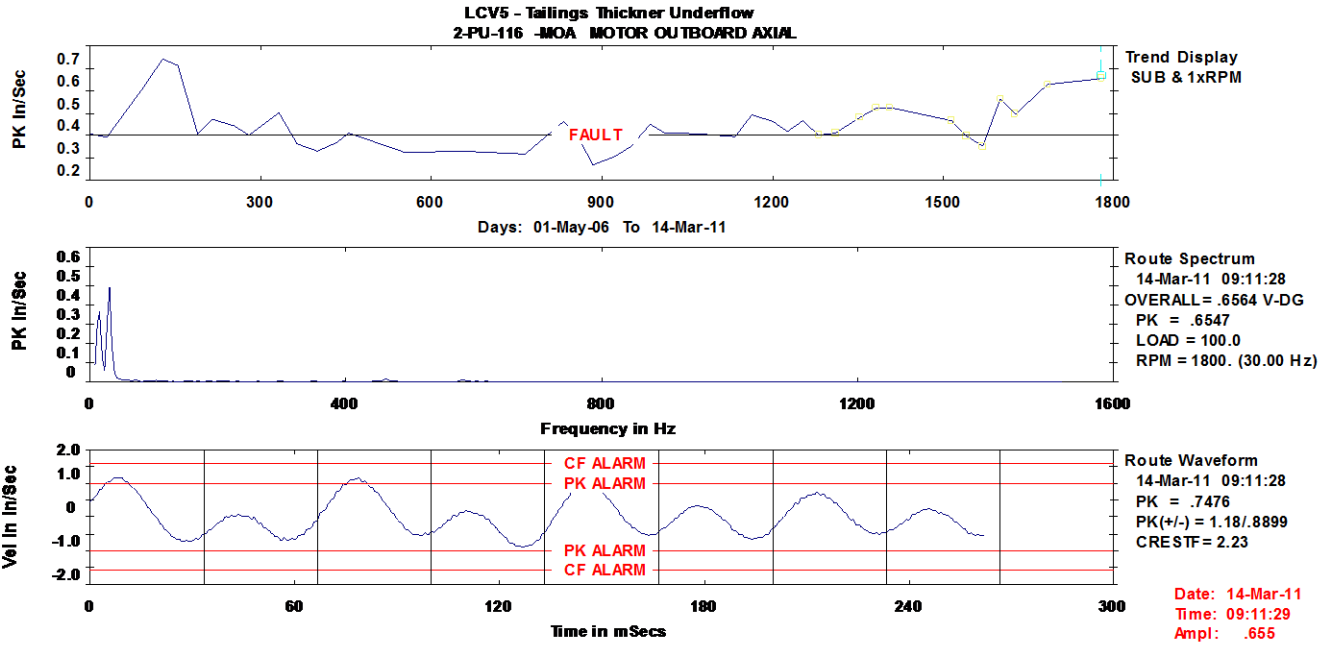
5/ 1-CN-003 Wash Plant Feed Weigh Belt

I recorded a high vibration @ 14.78 Hz, this is structural vibration resonating through the building the source is the screens on the 3rd and 5th floor.



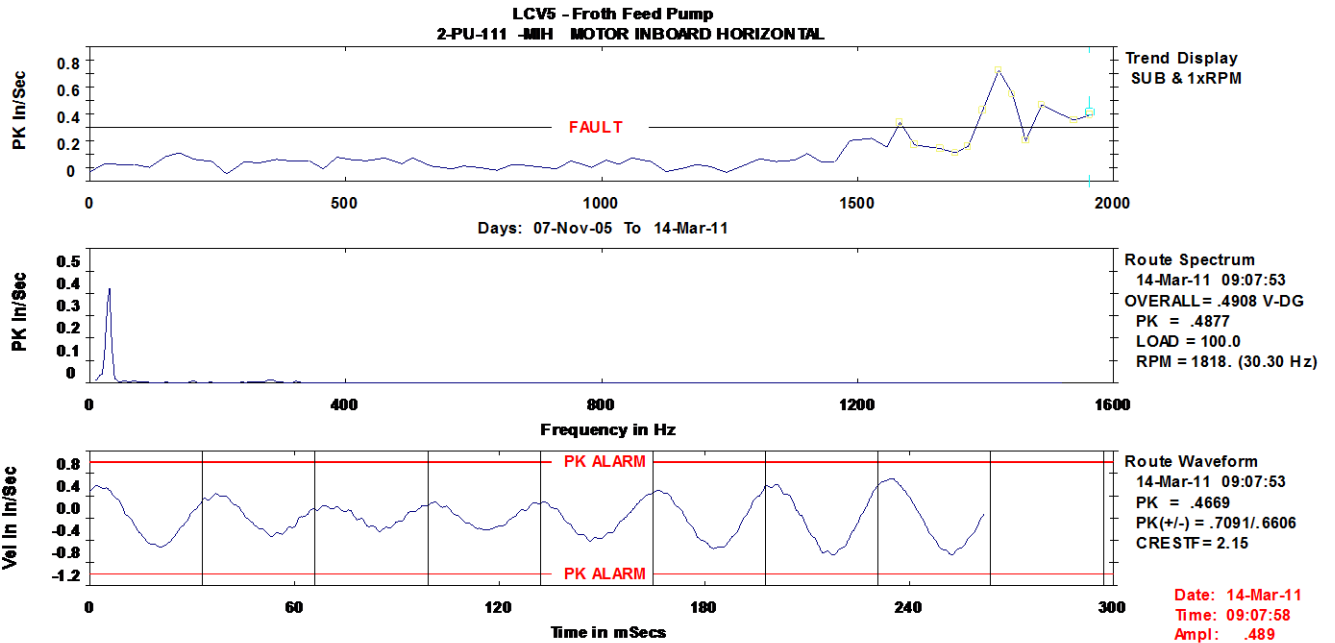
6/ 2-PU-116 Tailings Thickener Underflow Pump

Check the belts for wear / looseness.



7/ 2-PU-111 Froth Feed Pump

Check for a damaged or contaminated sheave and worn drive belts.



All of the above had an alarm code "D" and should be addressed ASAP.

The following machines triggered an alarm code category “C” and will be monitored closely next month:

2-PU-112, 2-CN-001, 6-CP-301, 2-CN-002, 3-PU-101, 2-CE-301, 3-MI-102 & 2-CE-302

Alarm code definitions:

A – Time to alarm tripped.

B – Early warning level exceeded

C – Absolute alarm value exceeded.

D – Fault alarm value exceeded.

We trust that the above is in line with your requirements but if you have any questions please do not hesitate to contact us.

Regards: Rob